

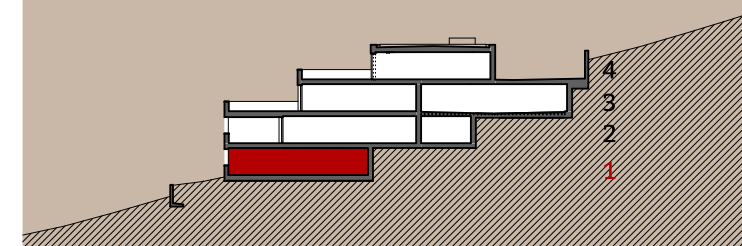
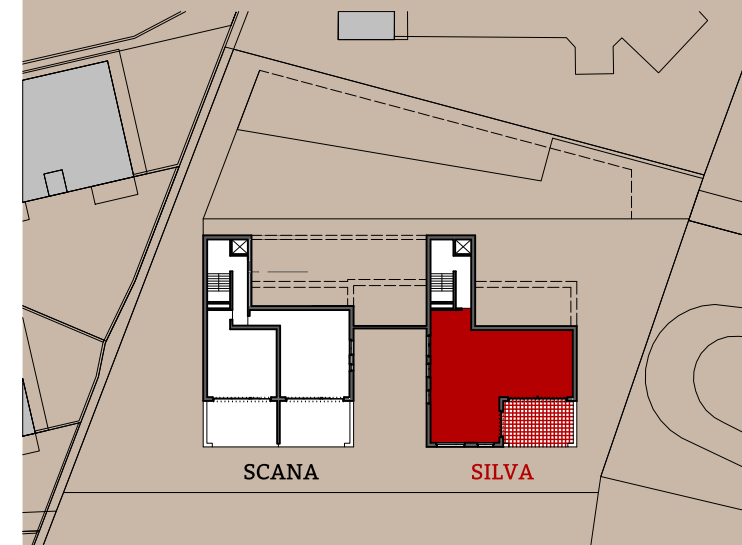


Wohnen am Theresienhang

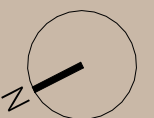
Mühlegasse 31+33 | FL Schaanwald

SILVA Top 10
Eigentums-Wohnung auf Ebene 1 | 5,5-Zimmer

| | |
|-------------------------|--------------------------|
| Netto Nutzfläche | 153 m² |
| Terrasse | 38 m ² |
| Kellerabteil | 8 m ² |



0 2m 4m
M 1:100



TOP 10

